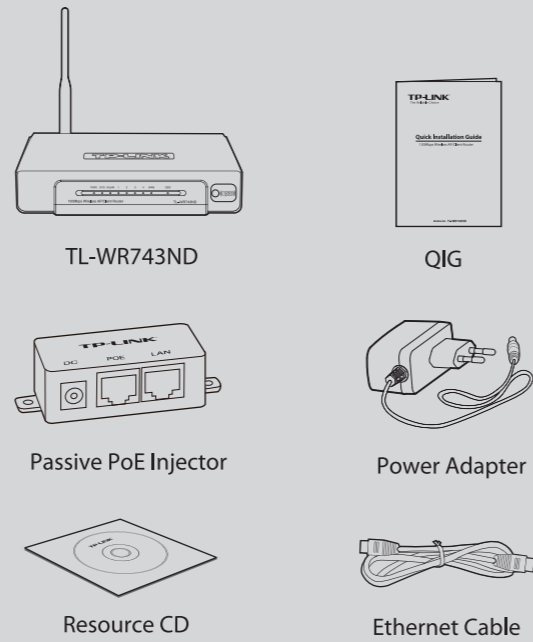


## Quick Installation Guide

150Mbps Wireless AP/Client Router

MODEL NO. TL-WR743ND

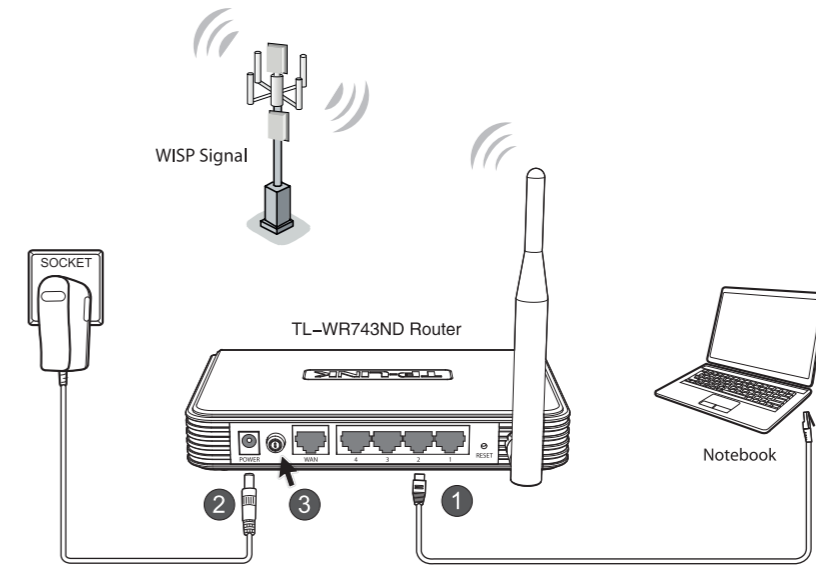
### Package Contents



### System Requirement

- Windows 7
- Windows Vista
- Windows XP
- Windows 2003
- Windows 2000
- Windows 98
- Windows Me
- Mac
- Linux

## 1 Hardware Connection

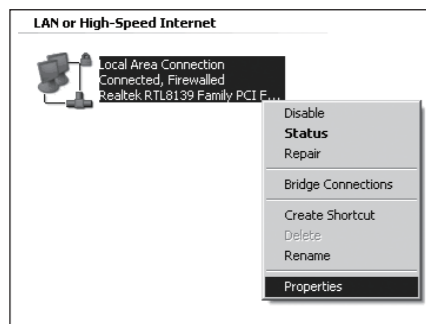


- 1 Connect your computer to the **LAN** port of your router with an Ethernet Cable.
  - 2 Plug one end of the provided power adapter into the **POWER** jack of the router, and the other end to a standard electrical wall socket.
  - 3 Press the power button of the router.
- Note**
1. You are recommended to place the router away from electrical devices, such as ceiling fans, home security systems, microwave and the base for a cordless phone.
  2. If the distance between the outlet and the router is too long to supply power, you can refer to the Power over Ethernet (PoE) solution in Appendix B: With PoE Setup.

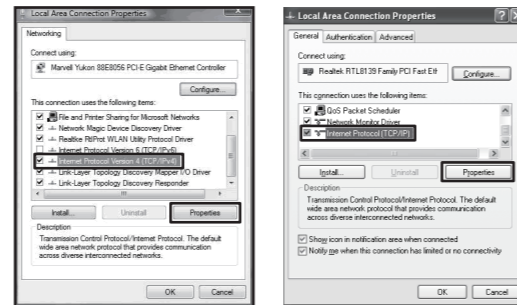
## 2 PC Configuration

- 1 For Windows 7/Vista, click **Start > Settings > Control Panel > View network status and tasks > Manage network connection**.  
For Windows XP/2000, click **Start > Control Panel > Network and Internet Connections > Network Connection**.

- 2 Right-click **"Local Area Connection"** and then click **"Properties"**.



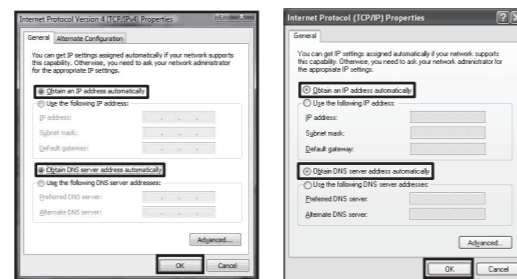
- 3 Select **"Internet Protocol (TCP/IP)"** and click **"Properties"**.



For Windows 7/Vista

For Windows XP/2000

- 4 Select **"Obtain an IP address automatically"** and **"Obtain DNS server address automatically"**. Then click **"OK"**.

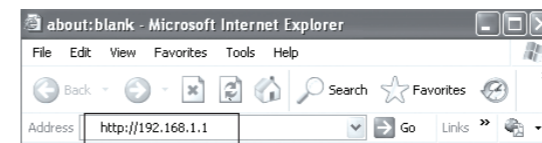


For Windows 7/Vista

For Windows XP/2000

## 3 Router Configuration

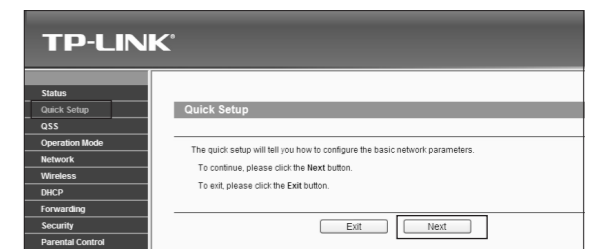
- 1 Open a web browser. Type in **"192.168.1.1"** and press Enter.



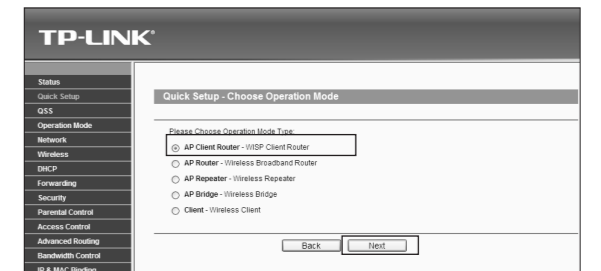
- 2 Enter the User name and Password (**admin/admin**) and click **"OK"**.



- 3 After a successful login, click **"Quick Setup"** item and then click **"Next"** to continue.



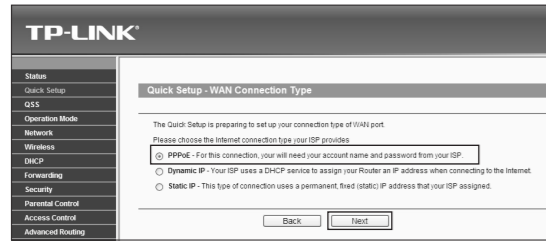
- 4 Select **"AP Client Router"** mode and click **"Next"**. (Here takes AP Client Router mode for example.)



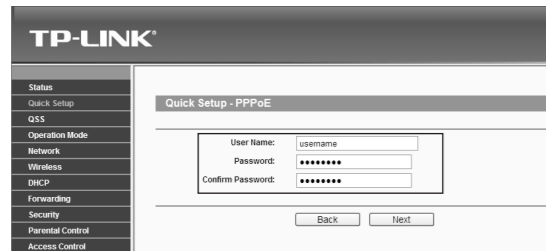
(To be continued)

# 3 Router Configuration (continued)

5 Choose your WAN Connection Type and click "Next" to continue.

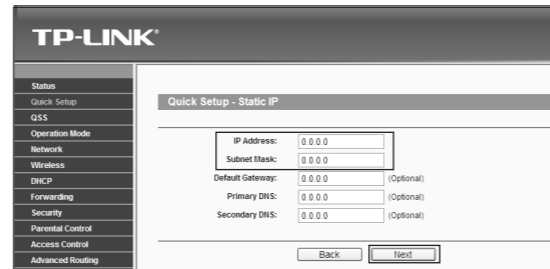


a) If "PPPoE" is selected, please enter the "User Name" and "Password" given by your WISP. Then click "Next".

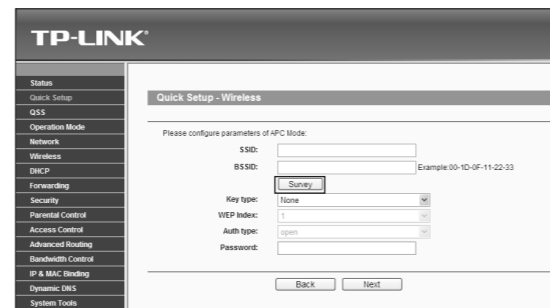


b) If "Dynamic IP" is selected, the Router will automatically receive the IP parameters from your WISP without needing to enter any parameters.

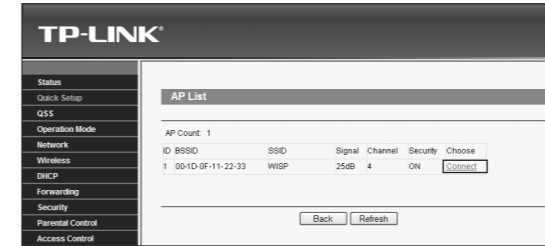
c) If "Static IP" is selected, please enter the "IP Address" and "Subnet Mask" given by your WISP. Then click "Next".



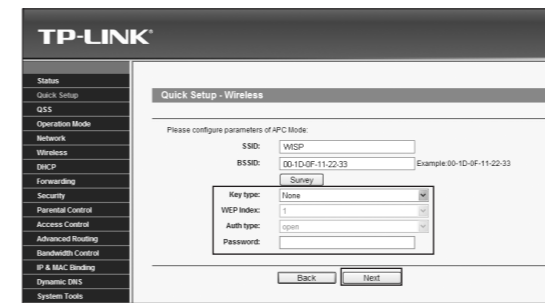
6 Click "Survey" button to find the available wireless networks.



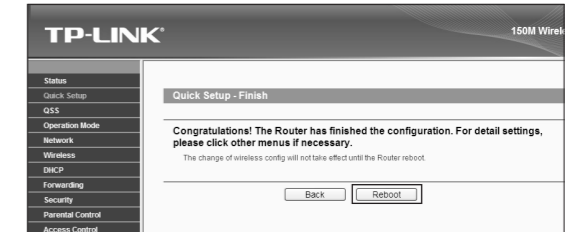
7 Select the SSID of your target network and click "Connect".



8 The SSID and BSSID will be automatically filled into the wireless setting figure. Select the "Key type" and enter the "Password". Then click "Next".



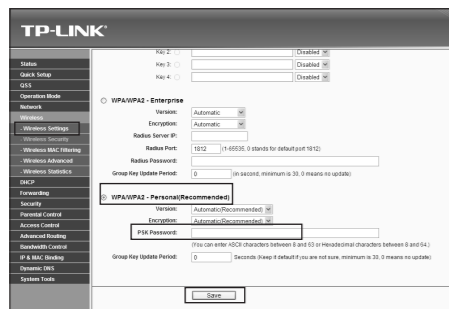
9 Click the "Reboot" button to make your wireless configuration take effect and finish the Quick Setup. (You're recommended to proceed to Appendix A to secure your local wireless network.)



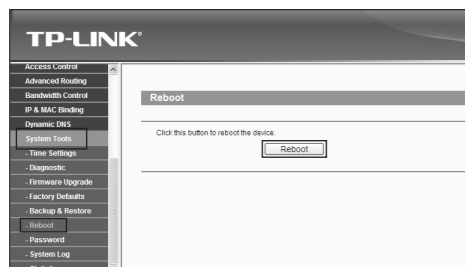
For the configurations of AP Router mode, Repeater mode, Bridge mode and Client mode, please refer to the User Guide on the resource CD.

## Appendix A: Wireless Security Setup

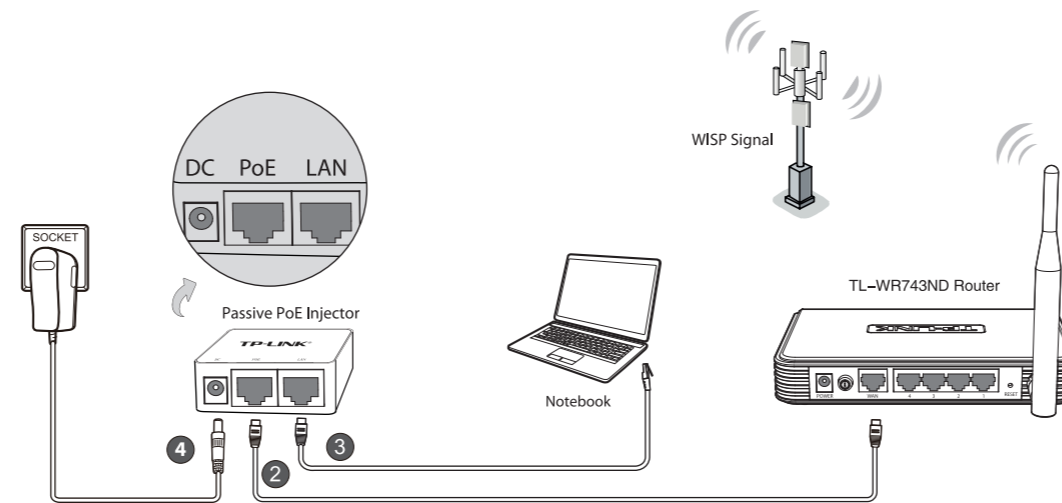
1 Select "Wireless > Wireless Security" page. Then choose "WPA-PSK/WPA2-PSK - Personal" and enter a security key of 8~64 characters (numbers or letters) in the "PSK Password" field.



2 Select "System Tools > Reboot" page. Then click "Reboot" button to make your wireless configuration take effect.



## Appendix B: With PoE Setup



- 1 Turn off all your network devices, including your computer(s), Passive PoE injector and the router.
- 2 Connect the **WAN** port of your router to the **PoE** port on the Passive PoE injector with an Ethernet Cable.
- 3 Connect your computer to the **LAN** port of your Passive PoE injector with an Ethernet Cable.
- 4 Plug the provided power adapter into the **DC** jack on the Passive PoE injector, and the other end to a standard electrical wall socket.



1. The passive PoE injector supports a cable length up to 30 meters due to the environment.
2. If you need a longer data transmission distance (not exceeding 100 meters), TP-LINK's 48V PoE adapters such as TL-POE200, TL-POE150S and TL-POE10R are recommended.

## Technical Support

- For more troubleshooting help, go to [www.tp-link.com/support/faq.asp](http://www.tp-link.com/support/faq.asp)
- To download the latest Firmware, Driver, Utility and User Guide, go to [www.tp-link.com/support/download.asp](http://www.tp-link.com/support/download.asp)
- For all other technical support, please contact us by using the following details:

<p><b>Global</b> Tel: +86 755 26504400 E-mail: <a href="mailto:support@tp-link.com">support@tp-link.com</a> Service time: 24hrs, 7days a week</p>	<p><b>USA/Canada</b> Toll Free: +1 866 225 8139 E-mail: <a href="mailto:support.usa@tp-link.com">support.usa@tp-link.com</a> Service time: 24hrs, 7days a week</p>
<p><b>Singapore</b> Tel: +65 62840493 E-mail: <a href="mailto:support.sg@tp-link.com">support.sg@tp-link.com</a> Service time: 24hrs, 7days a week</p>	<p><b>UK</b> Tel: +44 (0) 845 147 0017 E-mail: <a href="mailto:support.uk@tp-link.com">support.uk@tp-link.com</a> Service time: 24hrs, 7days a week</p>
<p><b>Australia &amp; New Zealand</b> Tel: AU 1300 87 5465 NZ 0800 87 5465 E-mail: <a href="mailto:support@tp-link.com.au">support@tp-link.com.au</a> Service time: 24hrs, 7days a week</p>	<p><b>Malaysia</b> Tel: 1300 88 875465 (1300 88TPLINK) Email: <a href="mailto:support.my@tp-link.com">support.my@tp-link.com</a> 24 hours a day, 7 days a week</p>
<p><b>Turkey</b> Tel: 444 19 25 (Turkish Service) E-mail: <a href="mailto:support.tr@tp-link.com">support.tr@tp-link.com</a> Service time: 9:00 AM to 6:00 PM, 7days a week</p>	<p><b>Italy</b> Tel: +39 02 66987799 E-mail: <a href="mailto:support.it@tp-link.com">support.it@tp-link.com</a> Service time: 9:00 AM to 6:00 PM, from Monday to Friday</p>
<p><b>Switzerland</b> Tel: +41 (0)848 800998 (German service) E-mail: <a href="mailto:support.ch@tp-link.com">support.ch@tp-link.com</a> Fee: 4-8 Rp/min, depending on rate of different time Service Time: Monday to Friday 9:00 AM to 6:00 PM. GMT+1 or GMT+2 (Daylight Saving Time)</p>	<p><b>Germany / Austria</b> Tel: +49 1805 875465 (German Service) / +49 1805 TPLINK E-mail: <a href="mailto:support.de@tp-link.com">support.de@tp-link.com</a> Fee: 0.14 EUR/min from the German fixed phone network and up to 0.42 EUR/min from mobile phone Service time: GMT+ 1 or GMT+ 2 (Daylight Saving Time in Germany) Except bank holidays in Hesse</p>

TP-LINK TECHNOLOGIES CO., LTD.  
[www.tp-link.com](http://www.tp-link.com)